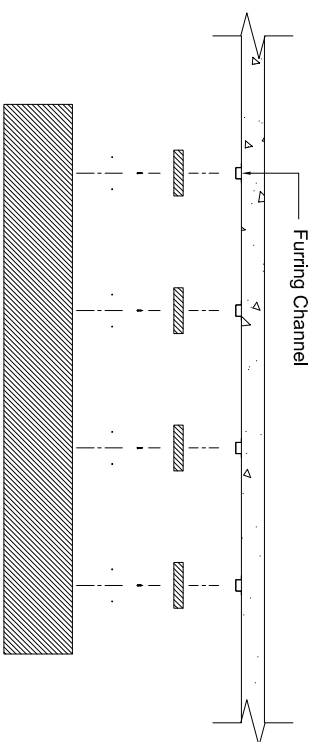
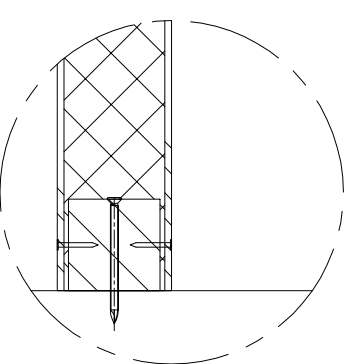
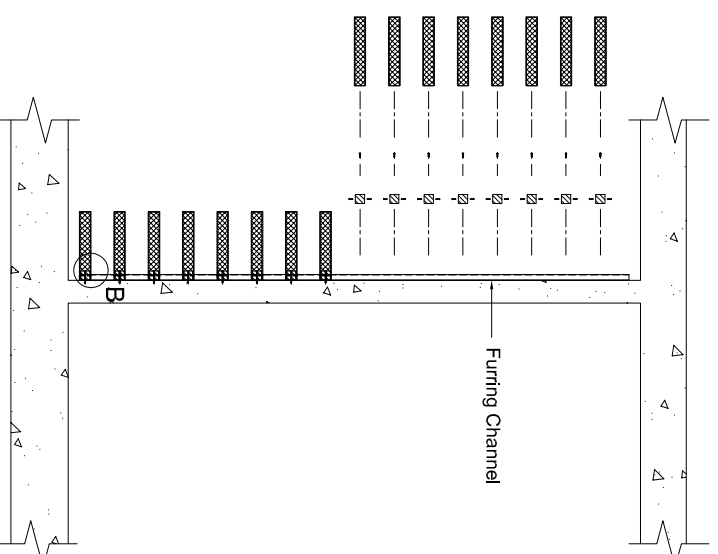
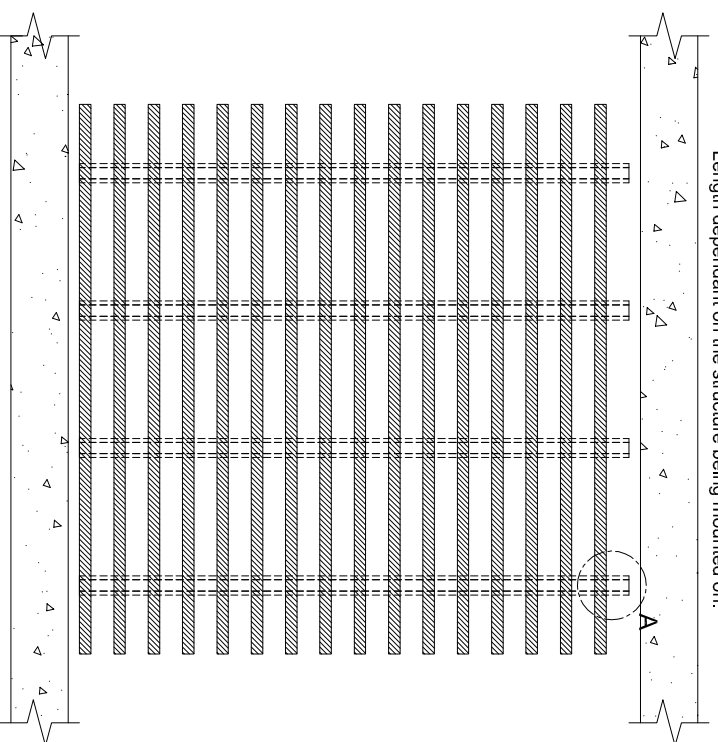
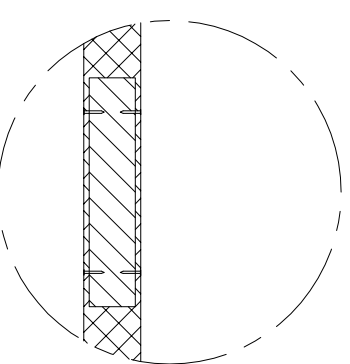


DecorSlatMax with Secret Nail Fixing Method

Ceiling or Wall Application



NOTE: FIXED FROM SIDE
(secret fix)



Disclaimer:

All specifications shown in these documents are intended as a guide only & should not be considered as conclusive. Fixing types & sizes used to install these products must be considered in conjunction with site conditions.

It is the users responsibility to ensure the use of this document coincides with their own judgment and is appropriate for the application. Decor Systems cannot be held responsible for any consequences arising from the improper use of this manual (whether negligence or otherwise).

THESE DESIGNS, DRAWINGS & SPECIFICATIONS & COPYRIGHT THEREOF ARE THE PROPERTY OF DECOR SYSTEMS AUSTRALIA & MUST NOT BE USED, RETAINED OR COPIED WITHOUT THE WRITTEN AUTHORITY OF DECOR SYSTEMS AUSTRALIA.

Installation Guide

1. Set out the timber studs or steel sections to suit the size of the panels. Recommendation of 400mm centres.
2. Position & fix the cleats to the framework for each slat to suit the set out required. Can be fixed from the face or from rear, depending on access available. It is important that the cleats are level with each other & plumb.
3. Locate & position each slat with the structure mounted cleats. Push hard in to place until the core of the slat gives way (for the cleat) then fix the slat to the cleats from the sides using secret nailing..
4. Continue with the remainder of the slats until whole ceiling or wall area is clad.

